



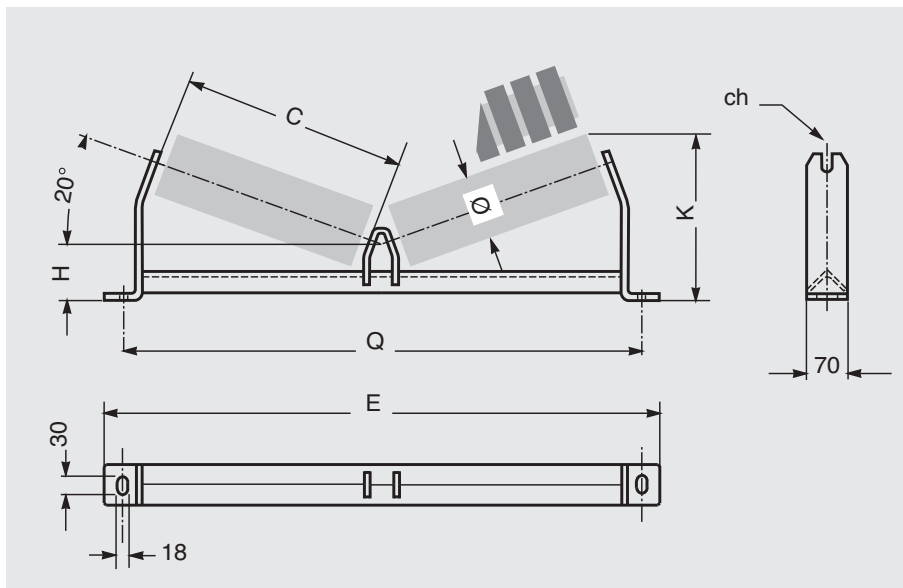
### 3 Troughing

#### sets

#### transom

## A2 S-20°

For light upper troughing sets with two rollers, plain or with impact rings



#### for rollers series:

**MPS**  
 ø 60, 76, 89, 102  
 spindle 15  
 bearing 6202  
 ch = 17

**PSV/1-FHD**  
 ø 63, 89, 108  
 spindle 20  
 bearing 6204  
 ch = 14

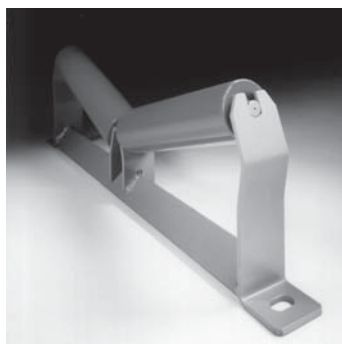
**PL**  
 ø 90, 110  
**PLF**  
 ø 89, 108  
 spindle 20  
 bearing 6204  
 ch = 30; 14

order codes	belt width mm	roller		ch	transom					weight* without rollers Kg
		Ø mm	C		capacity Kg	H mm	K max	Q	E	
A2 S/49	300	60 - 63 - 76 89 - 90 102 - 108 - 110	208	14 - 17 - 30	338	95	213	540	600	3.9
A2 S/51	400		258		286	95	240	640	700	4.4
A2 S/53	500		323		247	95	262	740	800	4.9
A2 S/55	650		388		205	95	285	890	950	5.6
A2 S/57	800		473		167	95	314	1090	1150	6.6

On request transoms may be supplied with different dimensions, characteristics and angles.

Example of ordering  
 A2S/51, 400, F17

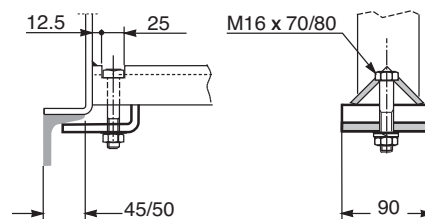
for special designs  
 see pages pag. 200



A2 S-20° Standard

### A2 ST-20° Special design with bracket

for fixing the transom without drilling the main frame



\* Add 1.5 kg for the special design with bracket