

80LP-138LP CONNECTION DIAGRAMS

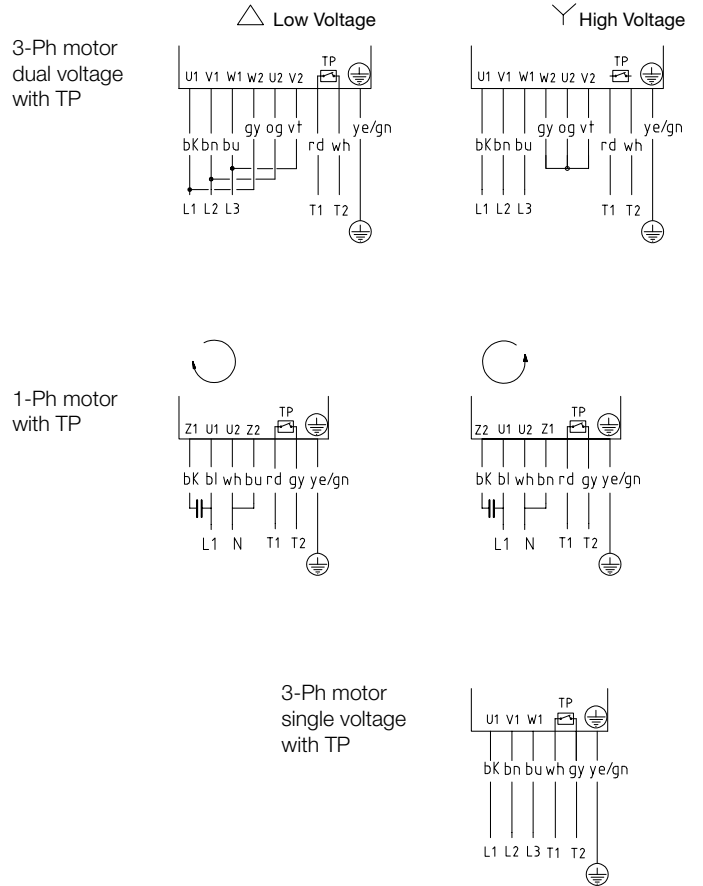
Connection diagrams for drum motor cable connection 80LP - 138LP

Colors or lead numbers for standard turning direction clockwise.

TP - Thermal protector T1 & T2

Color code

- bk - black
- bn - brown
- rd - red
- og - orange
- ye - yellow
- gn - green
- bu - blue
- vt - violet
- gy - grey
- wh - white



80LS-165LS CONNECTION DIAGRAMS

Connection diagrams for drum motor cable connection 80LS - 165LS ELB - only single voltage

Lead numbers for standard turning direction clockwise.

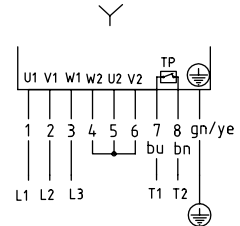
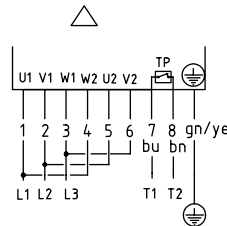
TP - Thermal protector T1 & T2

ELB - Electromagnetic brake B1 & B2

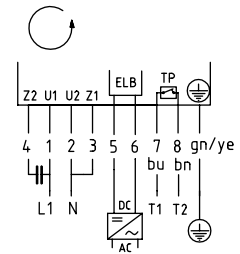
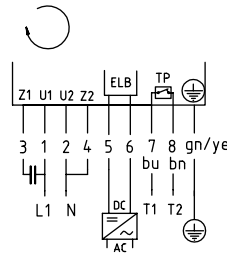
Color code

- gn - green
- ye - yellow
- bu - blue
- bn - brown

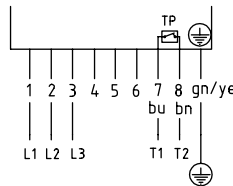
3-Ph motor dual voltage with TP



1-Ph motor with TP & ELB optional for 138LS & 165LS only

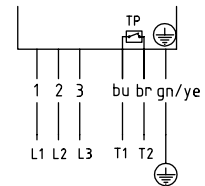


3-Ph motor single voltage with TP & 9 leads



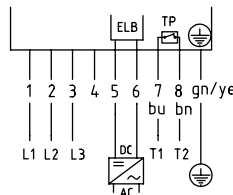
Lead 4,5,6 not used

3-Ph motor single voltage with TP & 6 leads



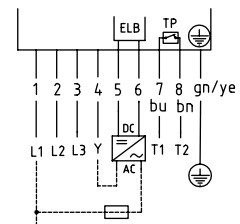
Lead 4 not used

3-Ph motor single voltage with TP & ELB



Lead 4 not used

3-Ph motor single voltage with TP & ELB



Use lead 4 for internal ELB only!

113LS - 220H CONNECTION DIAGRAMS

Connection diagrams for drum motor Terminal box with WAGO clamp 113LS - 220H (ELB only single voltage)

Characters in brackets for 2 stage gearbox
turning direction clockwise.

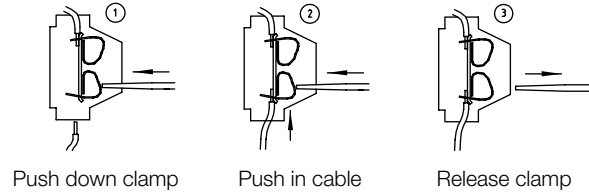
TP - Thermal protector T1 & T2

ELB - Electromagnetic brake B1 & B2

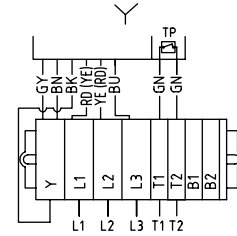
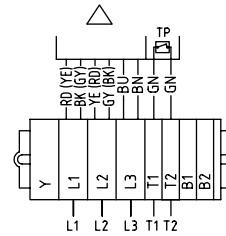
Color code

- RD - Red
- YE - Yellow
- BK - Black
- GY - Grey
- BU - Blue
- GN - Green
- WH - White
- BN - Brown

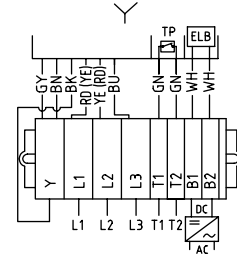
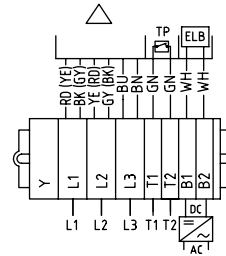
Assembly instruction



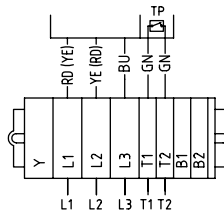
3-Ph motor
dual voltage
with TP



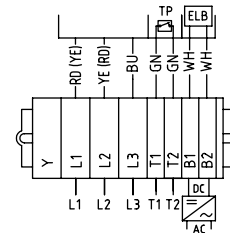
3-Ph motor
dual voltage
with TP & ELB



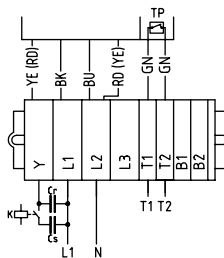
3-Ph motor
single voltage
with TP



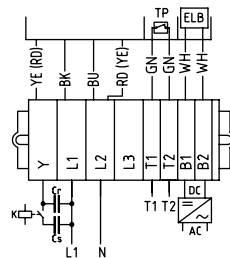
3-Ph motor
single voltage
with TP & ELB



1-Ph motor
with TP



1-Ph motor
with TP & ELB



Cr - Run capacitor
Cs - Start capacitor

Cr - Run capacitor
Cs - Start capacitor

220M - 220H CONNECTION DIAGRAMS

Connection diagrams for drum motor Cable connection 220M - 220H

Lead numbers for turning direction
clockwise.

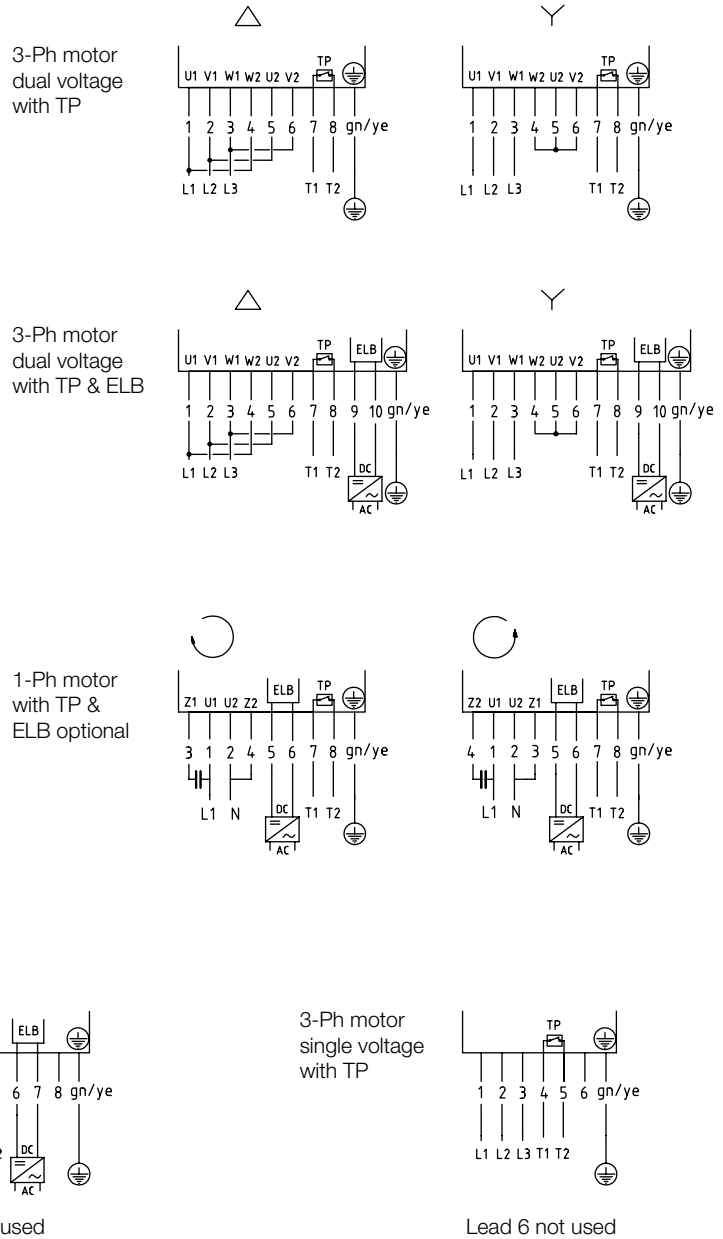
TP - Thermal protector T1 & T2

ELB - Electromagnetic brake

Color code

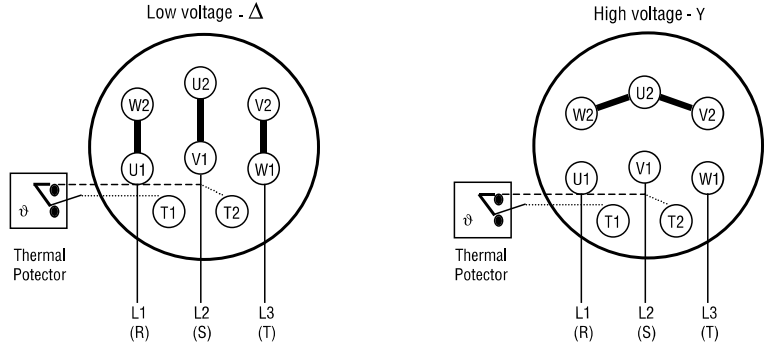
GN - Green

YE - Yellow

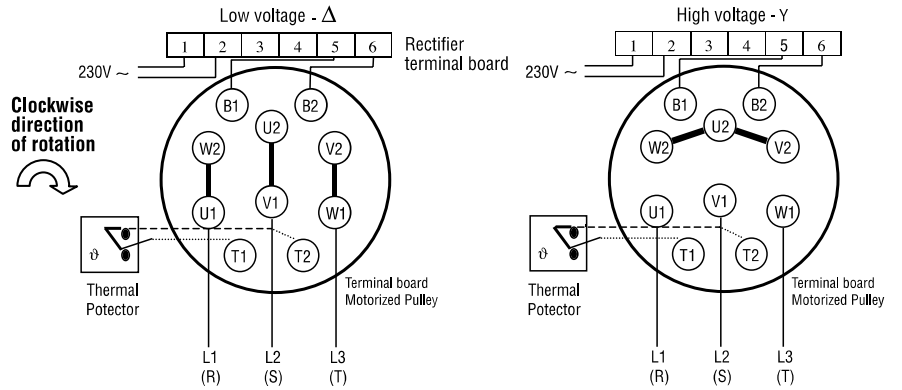


EXTERNAL CONNECTION DIAGRAMS FOR DRUM MOTORS 5.5 KW

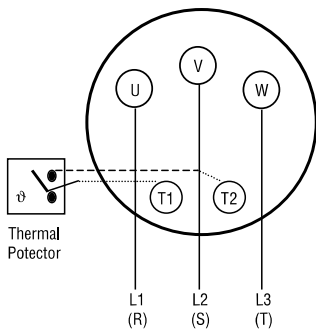
Terminal Box 5.5 kW



Electromagnetic Brake Configuration



3-phase single voltage 5.5 kW



USA - Configuration

