



## Designazione codice

Code designation

Per maggior comodità riportiamo il significato delle sigle di esecuzione indicate nei codici di ordinazione.

Il codice di ordinazione per i rulli è definito nell'ordine da: tipo, serie, diametro asse, esecuzione asse, diametro [mm] ed esecuzione tubo, lunghezza «C» [mm].

Qualora siano richieste più esecuzioni, dovranno essere indicate nel codice le sigle secondo l'incolonnamento delle tabelle A e B; le esecuzioni previste nella stessa colonna non sono compatibili fra di loro.

For facility purposes we list the meaning of the execution codes indicated.

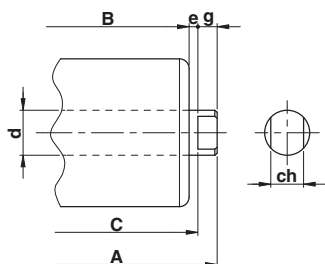
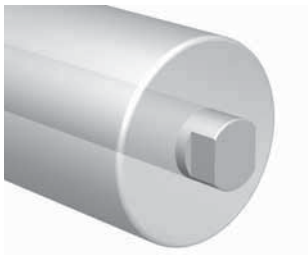
The ordering codes for the rollers are defined in order by: series, type, shaft diameter, shaft execution on request, tube diameter [mm] and execution, length «C» [mm].

In case of multiple execution request, the initials according to the column formation in the tables A and B should be included in the ordering code; the executions which result in the same column are not compatible.

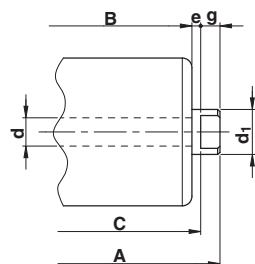
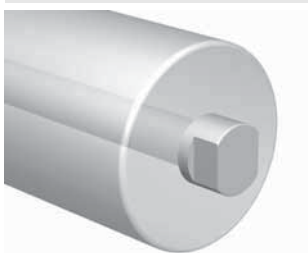
### Designazione codice / Code designation

Serie Rullo / Rullo series	PS
Tipo Rullo / Rullo type	/20
Diametro asse / Shaft diameter	20
Esecuzione asse / Shaft execution	R
Esecuzioni supplementari asse / Additional shaft executions	F
Diametro rullo / Roller diameter	89
Esecuzione base tubo / Tube execution	N
Esecuzioni supplementari tubo / Additional tube executions	P
Lunghezza C / C length	1000

### Esecuzioni asse / Shaft executions



**F** asse con chiave (ch) ottenuta con fresatura  
shaft with slots (ch) obtained by milling



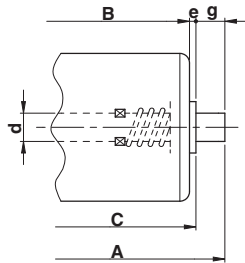
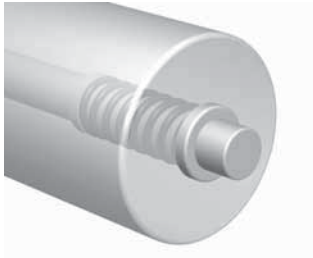
**B** asse con chiave (ch) ottenuta con bussola metallica  
shaft with slots (ch) obtained with metallic sleeve

**N** asse con chiave (ch) ottenuta con bussola in policarbonato  
shaft with slots (ch) obtained with polycarbonate bush

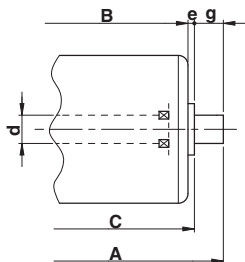
**G** asse con chiave ch = 14 + bussola in nylon con chiave CH = 30  
shaft with slot ch = 14 + nylon sleeve with CH = 30 slot

**Q** asse con chiave ch = 17 + bussola in nylon con chiave CH = 30  
shaft with slot ch = 17 + nylon sleeve with CH = 30 slot

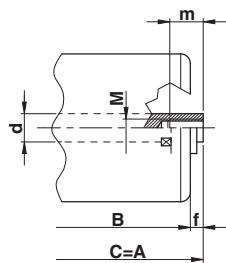
**Esecuzioni asse / Shaft executions**



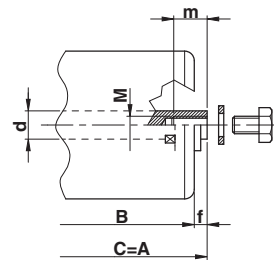
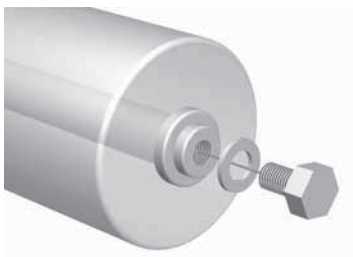
**D** asse con molla  
*shaft with spring*



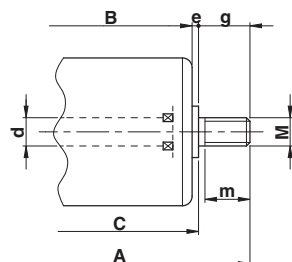
**S** asse fisso liscio  
*fixed shaft*



**R** asse forato e filettato  
*drilled and threaded shaft*

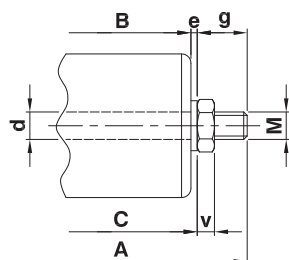
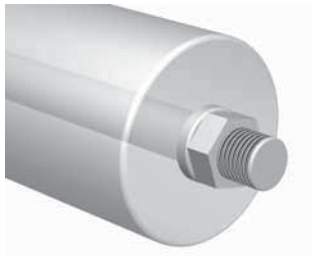


**RP** asse forato e filettato + vite e rondella (vite UNI 5737)  
*drilled and threaded shaft + bolt and washer (screw UNI 5737)*

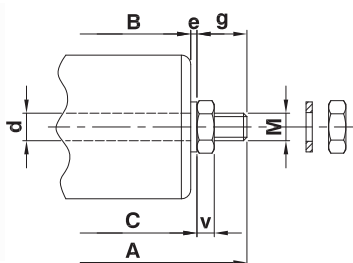


**M** asse con estremità filettate  
*shaft with threaded ends*

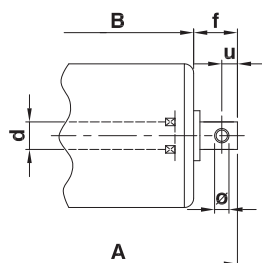
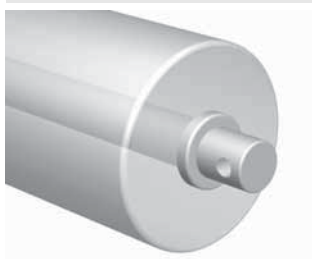
### Esecuzioni asse / Shaft executions



**ML** asse con estremità filettate + dado basso (UNI 5589)  
shaft with threaded ends + half nut (UNI 5589)



**MH** asse con estremità filettate + dado, controdado e rondella (dadi bassi UNI 5589)  
shaft with threaded ends + nut, lock nut and washer (half nuts UNI 5589)



**K** asse con fori ortogonali  
shaft with orthogonal holes

**J** asse zincato  
zinc plated shaft

**I** asse in acciaio inox  
stainless steel shaft

Tabella A / Table A

#### Sigle esecuzioni asse / Shaft executions codes

D	M	F	G	J
S	ML	B	Q	I
R	MH	N		
RP				
K				

La tabella indica le esecuzioni ottenibili sugli assi. Sono possibili più esecuzioni per lo stesso asse, purchè le sigle corrispondenti non siano rappresentate nella stessa colonna. Nell'indicare il codice, le sigle devono essere nell'ordine delle colonne.

#### ESEMPIO:

- Rulli tipo PS/20, asse forato e filettato con chiave, tubo  $\varnothing$  89 mm grezzo in acciaio con rivestimento in PVC, lunghezza C = 1000 mm
- Codice: PS/20 20RF 89NP 1000

The table shows the possible shaft executions. Many executions are possible for the same shaft, provided that the correspondent codes aren't represented in the same column. When indicating the code, the codes must be in the order of the columns.

#### EXAMPLE:

- Rollers type PS/20, drilled and threaded shaft with slot, rough and steel tube  $\varnothing$  89 mm lagged with PVC, length C = 1000 mm
- Code: PS/20 20RF 89NP 1000