

# 80LP-113LP Connection diagrams



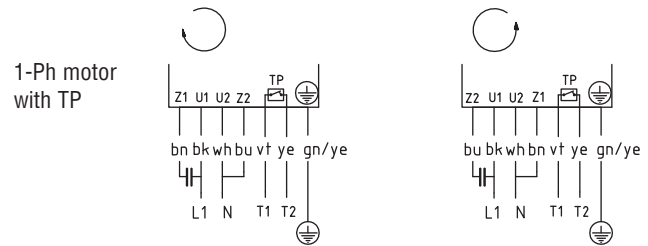
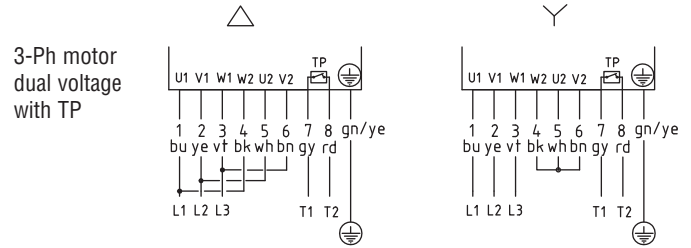
## Connection diagrams for Motorized Pulley cable connection 80LP - 113LP

Colors or lead numbers for standard turning direction clockwise.  
(lead numbers for screened cable)

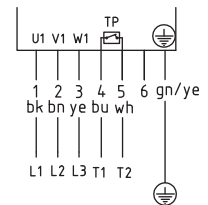
TP - Thermal protector T1 & T2

### Color code

- gn - green
- ye - yellow
- bu - blue
- bn - brown
- vt - violette
- bk - black
- wh - white
- rd - red
- gy - grey



3-Ph motor single voltage with TP & 6 leads



Lead 6 not used

**Connection diagrams for Motorized Pulley cable connection 80LS - 165LS**  
**ELB - only single voltage**

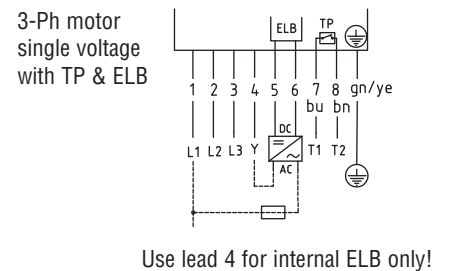
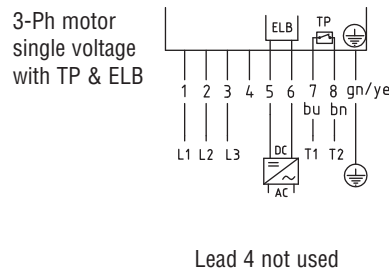
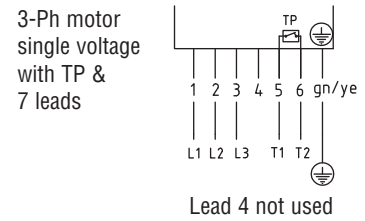
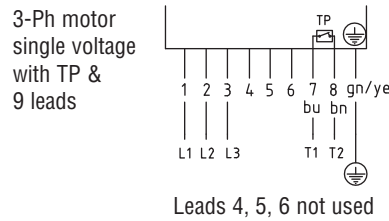
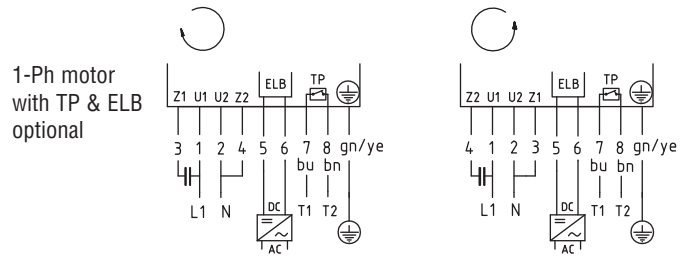
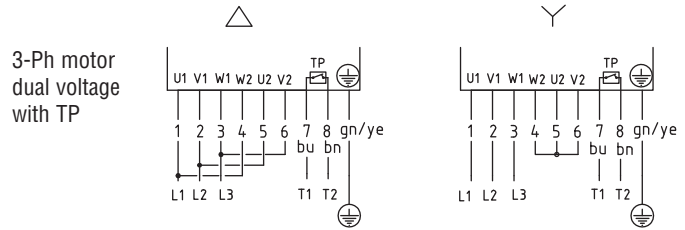
Lead numbers for standard turning direction clockwise.

TP - Thermal protector T1 & T2

ELB - Electromagnetic brake B1 & B2

**Color code**

- gn - green
- ye - yellow
- bu - blue
- bn - brown



# 113LS Connection diagrams



## Connection diagrams for Motorized Pulley Terminal box with WAGO clamp 113LS (ELB only single voltage)

Characters in brackets for 2 stage gearbox turning direction clockwise.

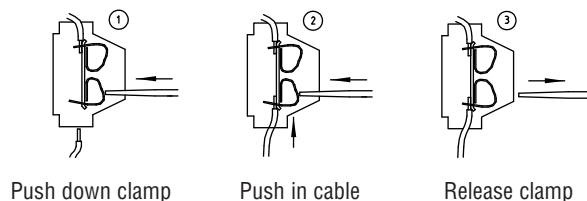
TP - Thermal protector T1 & T2

ELB - Electromagnetic brake B1 & B2

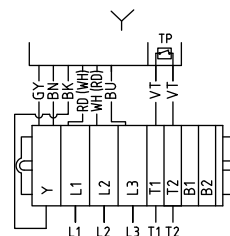
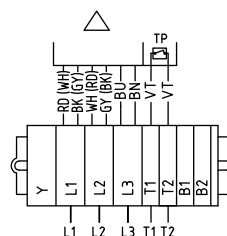
### Color code

- RD - Red
- BN - Brown
- BK - Black
- GY - Grey
- BU - Blue
- VT - Violet
- WH - White

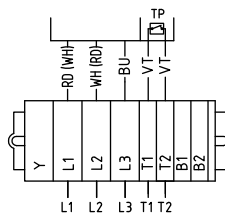
### Assembly instruction



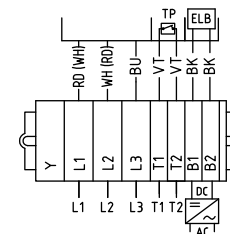
3-Ph motor dual voltage with TP



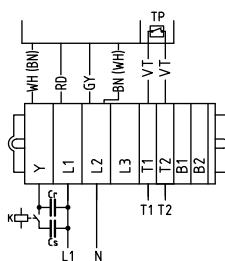
3-Ph motor single voltage with TP



3-Ph motor single voltage with TP & ELB

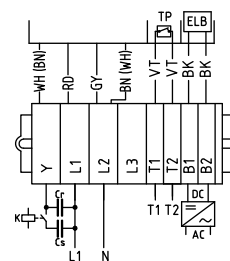


1-Ph motor with TP



Cr - Run capacitor  
Cs - Start capacitor

1-Ph motor with TP & ELB



Cr - Run capacitor  
Cs - Start capacitor

# 138LS - 400L Connection diagrams

## Connection diagrams for Motorized Pulley Terminal box with WAGO clamp 138LS - 400L (138LS - ELB only single voltage)

Characters in brackets for 2 stage gearbox turning direction clockwise.

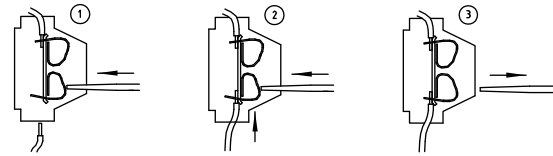
TP - Thermal protector T1 & T2

ELB - Electromagnetic brake B1 & B2

### Color code

- RD - Red
- YE - Yellow
- BK - Black
- GY - Grey
- BU - Blue
- GN - Green
- WH - White
- BN - Brown

### Assembly instruction

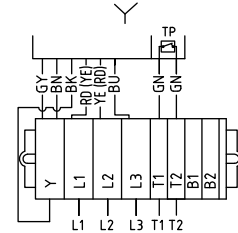
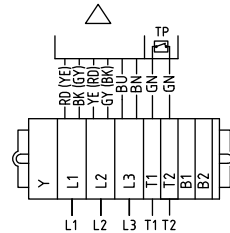


Push down clamp

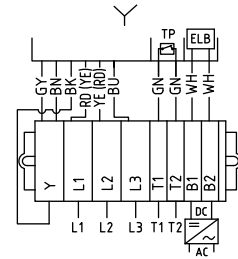
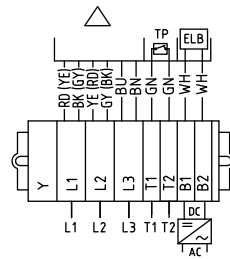
Push in cable

Release clamp

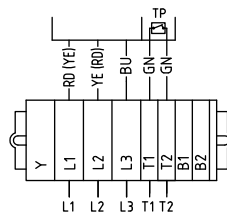
3-Ph motor dual voltage with TP



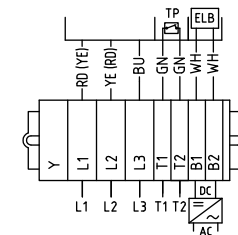
3-Ph motor dual voltage with TP & ELB



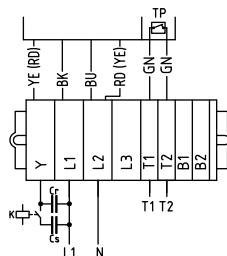
3-Ph motor single voltage with TP



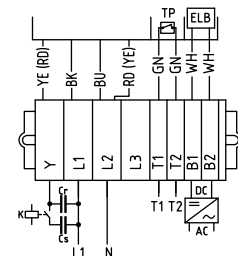
3-Ph motor single voltage with TP & ELB



1-Ph motor with TP



1-Ph motor with TP & ELB



Cr - Run capacitor  
Cs - Start capacitor

Cr - Run capacitor  
Cs - Start capacitor

# 220M - 400L Connection diagrams



## Connection diagrams for Motorized Pulley Cable connection 220M - 400L

Lead numbers for turning direction clockwise.

TP - Thermal protector T1 & T2

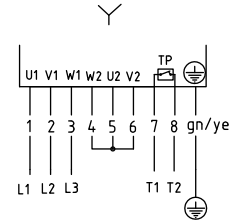
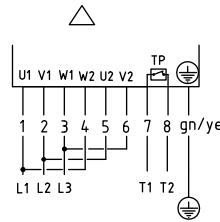
ELB - Electromagnetic brake

### Color code

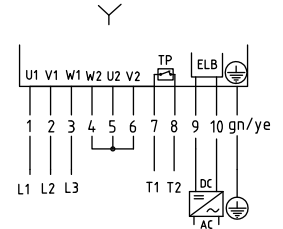
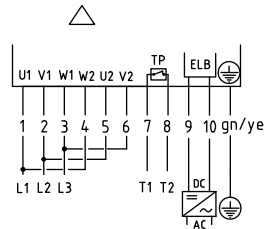
GN - Green

YE - Yellow

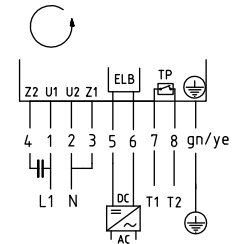
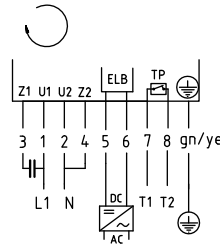
3-Ph motor  
dual voltage  
with TP



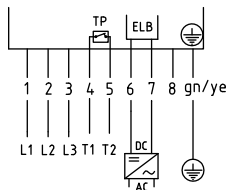
3-Ph motor  
dual voltage  
with TP & ELB



1-Ph motor  
with TP & ELB  
optional

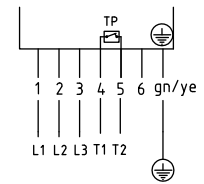


3-Ph motor  
single voltage  
with TP & ELB



Lead 8 not used

3-Ph motor  
single voltage  
with TP

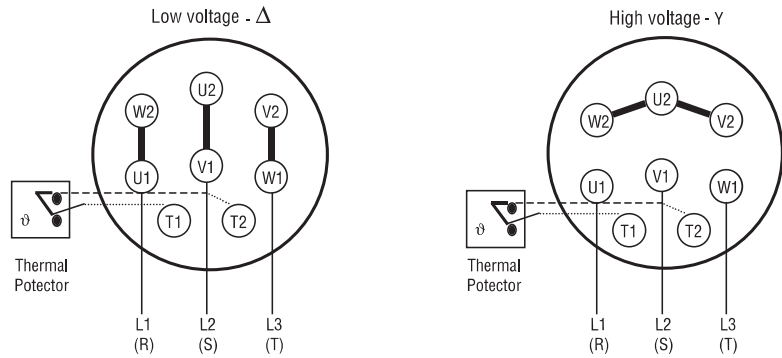


Lead 6 not used

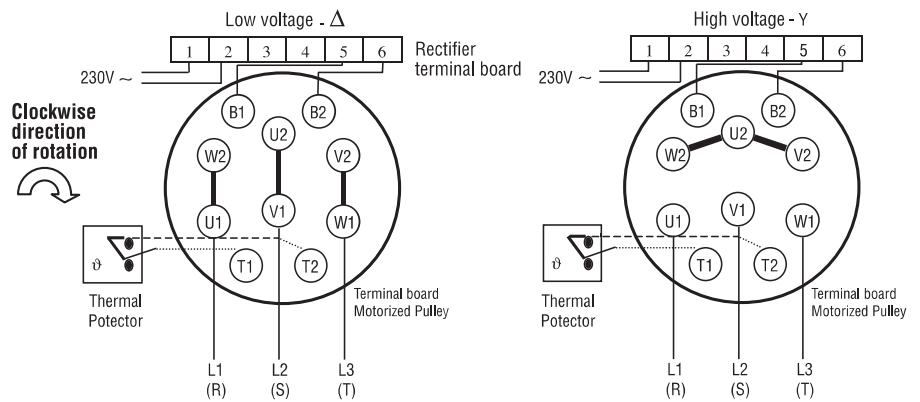


# External Connection Diagrams for Motorized Pulleys 5.5 kW - 7.5 kW

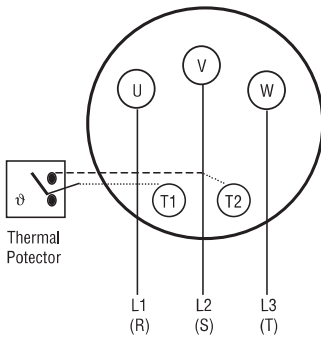
## Terminal Box 5.5 kW - 7.5 kW



## Electromagnetic Brake Configuration



## 3-phase single voltage 5.5 kW - 7.5 kW



## USA - Configuration

